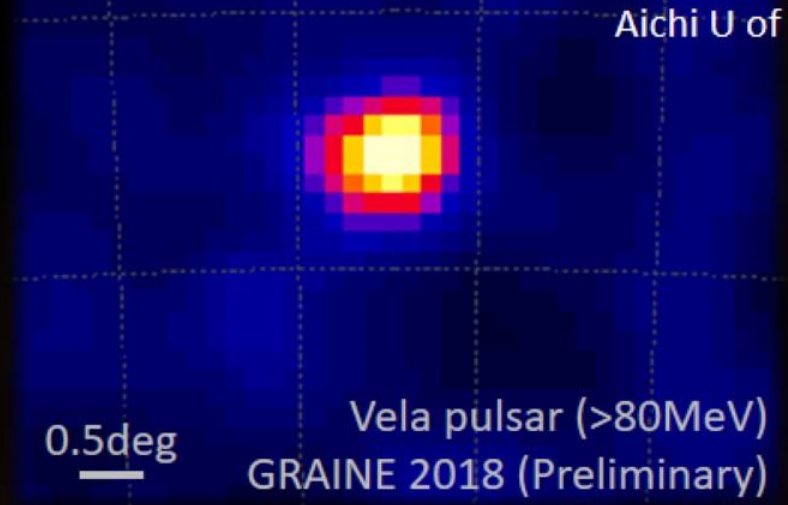


GRAINE precise γ -ray observations: latest results on 2018 balloon-borne experiment and prospects on next/future scientific experiments

Satoru Takahashi (Kobe Univ) for GRAINE collaboration

Aichi U of Education, Gifu U, Kobe U, Nagoya U, Okayama U of Science

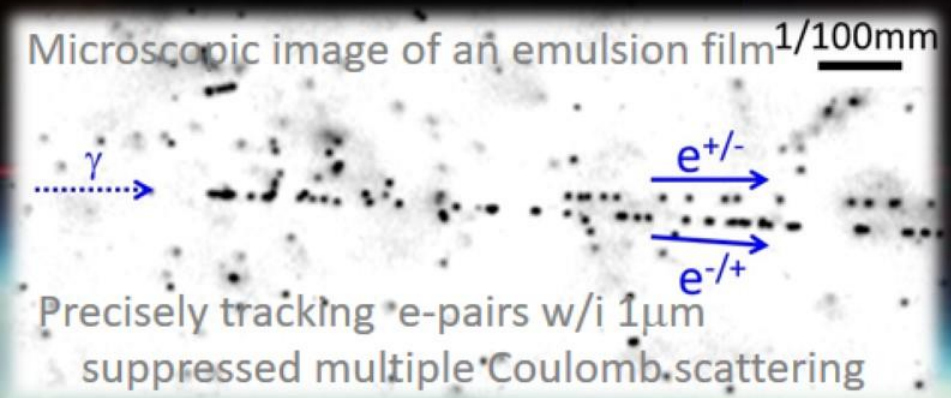
PI: Shigeki Aoki (Kobe Univ)



2023 – , Scientific Flights

Emulsion telescope

- ✓ Highest angular resolution
- ✓ First polarization sensitivity
- ✓ Largest aperture area



- Precisely tracking e-pairs w/i $1\mu\text{m}$
- suppressed multiple Coulomb scattering
 - High angular resolution
 - Polarization sensitive
- +Automatic large-area-analysis technique
- +Timestamping technique

