

Modelling TXS0506+056 with internal $\gamma - \gamma$ secondaries

37th International Cosmic Ray Conference (ICRC 2021)
Online – Berlin, Germany

Sunanda and Reetanjali Moharana

**Department of Physics
Indian Institute Of Technology Jodhpur, India**

July 12th – 23rd, 2021



॥ त्वं ज्ञानमयो विद्वानमयोऽसि ॥

Introduction

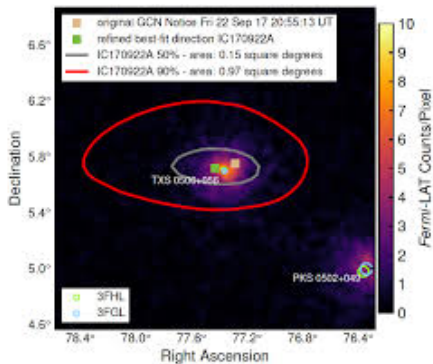


Figure: Fermi-LAT observation of IceCube-170922A location [[arxiv : 1807.08816](#)]

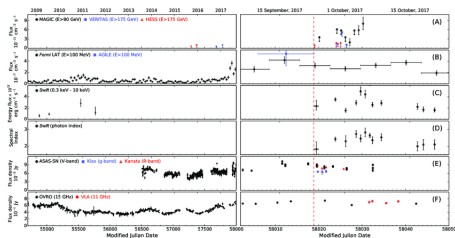


Figure: Time-dependent multiwavelength observation of TXS0506+056 [[arxiv : 1807.08816](#)]

Parameters used in the lepto-hadronic model are

Parameters	Value	Parameters	Value
α	1.02	l_0 (1/erg)	5×10^{45}
γ'_{emin}	1300	γ'_{emax}	7×10^3
δ	21.5	B (Gauss)	36
z	.3365	d (pc)	1.79×10^9
R (cm)	9.3×10^{14}	N_0 (1/erg)	1.31×10^{42}
γ'_{pmin}	1	γ'_{pmax}	1.06×10^{10}
α_p	2	t_{var} (days)	60

Result

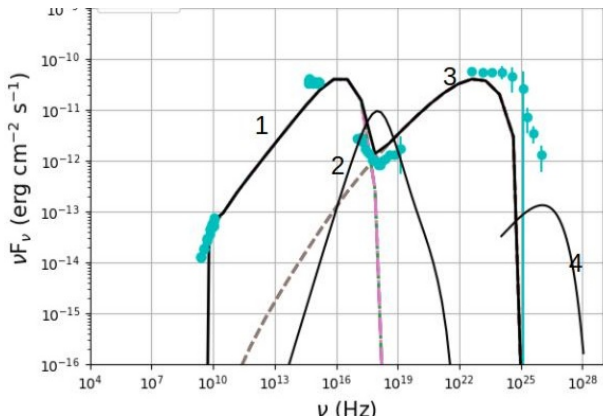


Figure: [The first curve characterizes electron synchrotron and the second curve denotes secondary contribution of gamma-gamma absorption and the 3rd curve shows SSC contribution and the 4th curve illustrates proton synchrotron contribution]

