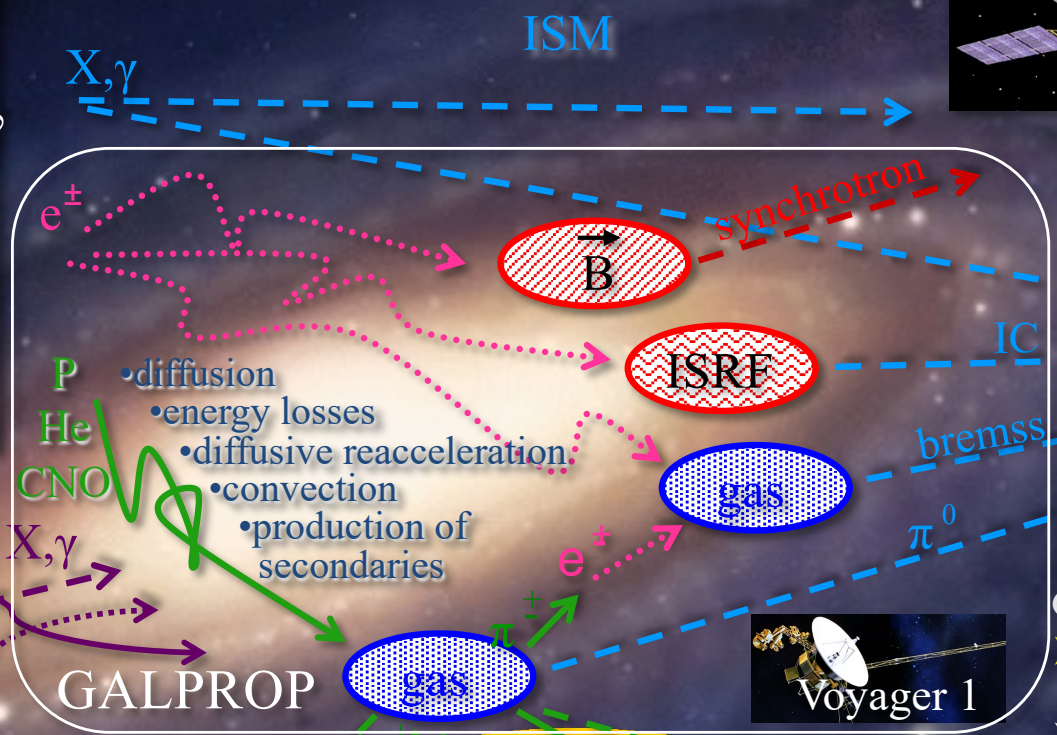
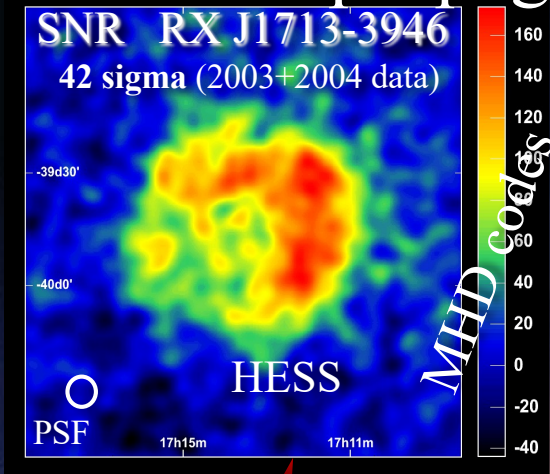
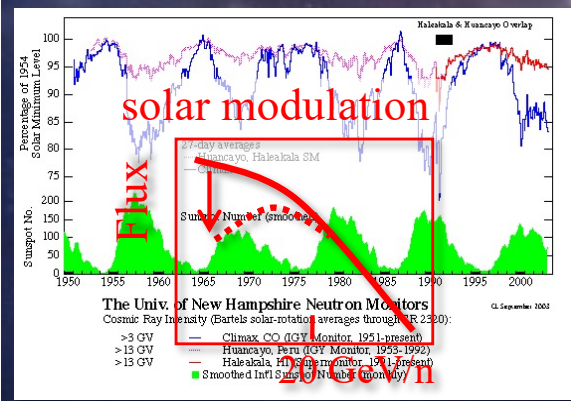


GALPROP framework for Galactic cosmic ray propagation and associated photon emissions



- Gamma rays:
- Trace the whole Galaxy
 - Line of sight integration
 - Only major species (p, He, e)

- CR measurements:
- Detailed information on all species
 - Only one location
 - Solar modulation



Igor V Moskalenko

Modeling is a must!